

Kendall Group

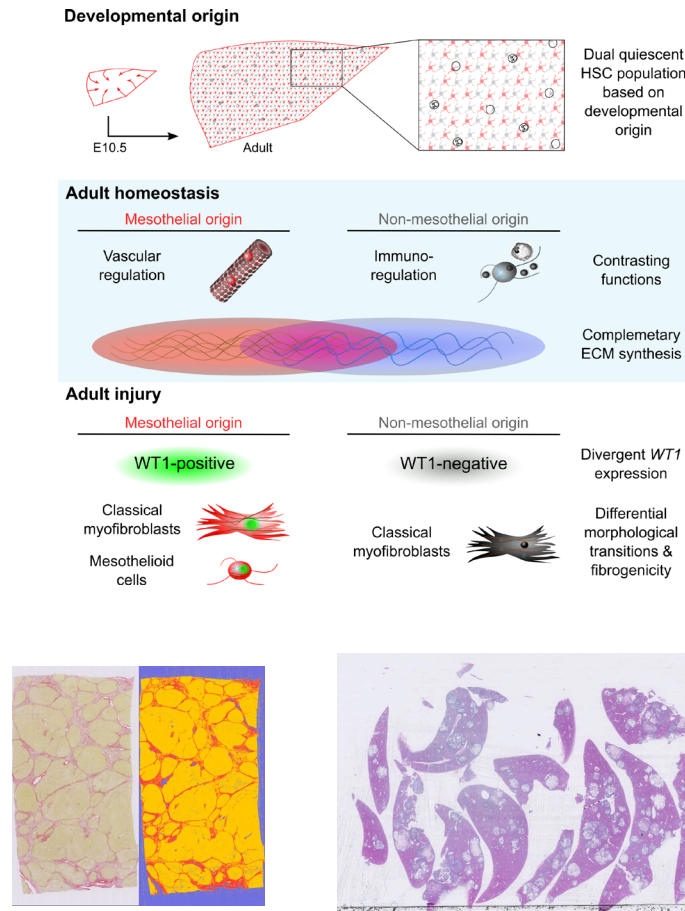
Application of quantitative pathology to clinical and experimental chronic liver disease and cancer

Pre-clinical models

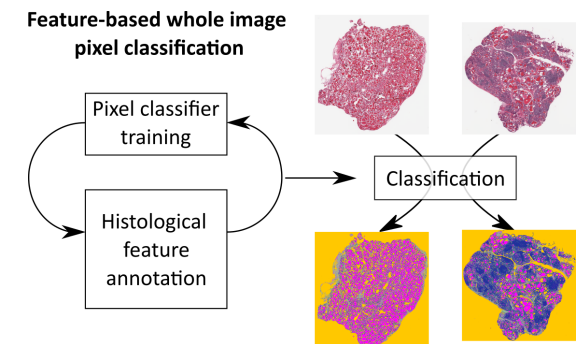
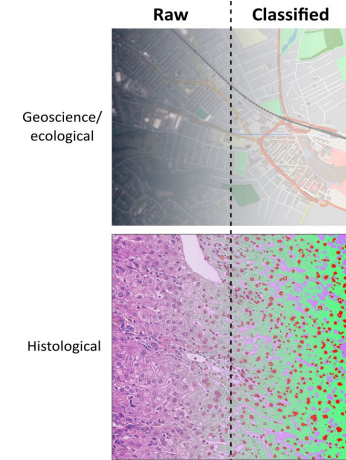
- Origins and heterogeneity of scar-orchestrating cells in liver fibrosis
- Comparative pathology of primary liver cancer (hepatocellular carcinoma and cholangiocarcinoma) models

Quantitative pathology

- Quantitative histopathology allowing the accurate measurement of treatment response and identification of prognostic tissue biomarkers
- Development of a tissue- and disease-agnostic environmental science landscape approach to histological topography



Preclinical - Myofibroblast lineage heterogeneity & fibrogenesis. Primary liver cancer



Quantitative pathology